



Program Guide

September 30 - October 8, 2016

www.asiaweeksf.com

About

Taking place in the first week of every October, Asia Week San Francisco Bay Area brings together Asian art galleries, auction houses, museums, and cultural institutions for a series of events celebrating Asian art and culture.

Asia Week San Francisco Bay Area is committed to the mission of establishing a broad platform to showcase and promote Asian art, further fostering appreciation for cultural diversity.

By presenting premier quality programs including exhibitions, auctions, lectures, seminars, curator and artist talks, film screenings, performances, and a featured annual symposium, Asia Week San Francisco Bay Area attracts a wide range of audience including artists, curators, scholars, collectors, dealers, auctioneers, and art enthusiasts from across the globe.

Table of Contents

| | |
|-------------------------|----|
| Calendar of Events* | 03 |
| Participants & Partners | 19 |
| Map | 57 |

*Visit www.asiaweeksf.com for the up-to-date events calendar and a complete list of participants and partners

September 30

Friday

Special events

9am – 6pm

Symposium

Thunder from the Steppes: New Perspectives on the Mongol Empire

Institute of East Asian Studies, UC Berkeley [Page 37](#)

📍 Charles Franklin Doe Memorial Library, University of California Berkeley, Berkeley, CA 94720-6000

10am – 11am

Other

Chinatown Art Walk

Chinese Culture Center [Page 29](#)

📍 750 Kearny Street, 3rd Floor, San Francisco, CA 94501

10:30am–12:30pm

Lecture

Artisans to Artists: Colonial & Post-Independent Art Education in Vietnam & Cambodia

Society for Asian Art [Page 54](#)

📍 200 Larkin Street, San Francisco, CA 94102

1:30pm–5:30pm

Asia Week San Francisco Bay Area Annual Symposium

Issues in Connoisseurship for Collectors of Asian Art

NanHai Art [Page 45](#)

Christie's [Page 31](#)

Asia Society Northern California [Page 23](#)

📍 NanHai Auditorium, 510 Broadway, Suite 302, Millbrae, CA 94030

5:30pm–6:30pm

Exhibition | Opening Reception

Literati Gathering: New Work by Wang Tiande

NanHai Art [Page 45](#)

📍 NanHai Gallery, 520 Broadway, Millbrae, CA 94030

6pm – 10pm

Opening Reception

APAture 2016: Here

Kearny Street Workshop [Page 42](#)

📍 1246 Folsom Street, San Francisco, CA 94103

Ongoing events

10am – 5pm

Exhibition | April 29 – October 23

Mother-of-Pearl Lacquerware from Korea

Asian Art Museum [Page 24](#)

📍 200 Larkin Street, San Francisco, CA 94102

Continue on the next page

September 30

Friday

10am – 4pm

Exhibition | September 29 – October 8

Contemporati

Contemporati Studios [Page 33](#)

📍 Pacific Heritage Museum, 608 Commercial St, San Francisco, CA 94111

10am – 5pm

Exhibition | September 23 – October 30

Gallery Route One “Far From Home” presents: Cynthia Tom | Stories to Tell: Discards & Variances

Gallery Route One [Page 35](#)

📍 11101 Highway One, Point Reyes Station, CA 94956

10am – 5pm

Exhibition | September 1 – October 30

Selected Treasures from the Longshantang Collection

S. Bernstein & Co., Jade & Oriental Art [Page 49](#)

📍 950 Mason Street, San Francisco, CA 94108

11am – 5pm

Exhibition | August 28 – October 30

Art of Resilience and Identity, Stories of the Japanese American Incarceration

Peninsula Museum of Art [Page 48](#)

📍 1777 California Drive, Burlingame, CA 94010

11am – 9pm

Exhibition | July 27 – November 27

Buddhist Art from the Roof of the World

Berkeley Art Museum & Pacific Film Archive [Page 25](#)

📍 2155 Center Street, Berkeley, CA 94704

12pm – 4pm

Exhibition | September 30 – October 8

Exquisite Art Under Adverse Conditions: From the Japanese American Incarceration Camps: 1942/1945

Japanese American Museum of San Jose [Page 41](#)

📍 535 North Fifth Street, San Jose, CA 95112

12pm – 6pm

Exhibition | September 30 – October 31

Animal Expressions: Homage to our Greatest Companions

International Art Gallery [Page 39](#)

📍 1581 Webster Street, Suite #202, San Francisco, CA 94115

12am – 12am

Exhibition | April 4 – October 25

From Print to Plate: Views of the East on Transferware

SFO Museum [Page 52](#)

📍 SFO, International Terminal (A2), San Francisco, CA 94110

October 1

Saturday

Special events

10am – 3pm

Lecture

Jade Collecting in the Glorious Ming Dynasty

S. Bernstein & Co., Jade & Oriental Art [Page 49](#)

📍 950 Mason Street, San Francisco, CA 94108

10am – 11am

Other

Chinatown Art Walk

Chinese Culture Center [Page 29](#)

📍 750 Kearny Street, 3rd Floor, San Francisco, CA 94501

1pm – 3pm

Artist Talk

Artist Panel Discussion: Mind Flows with Brush – Zhong Yueying's Transcultural Practices in Art

Chinese Culture Center [Page 29](#)

📍 750 Kearny Street, 3rd Floor, San Francisco, CA 94501

1:30pm–3:30pm

Lecture

Material Culture in “The Dream of the Red Chamber”

Society for Asian Art [Page 54](#)

📍 200 Larkin Street, San Francisco, CA 94102

1:30pm–3:30pm

Hands On Activity

Making Small Coaster with Hanji

Korean Center [Page 43](#)

📍 1362 Post Street, San Francisco, CA 94109

2pm – 4pm

Exhibition | Opening Reception

Contemporati

Contemporati Studios [Page 33](#)

📍 Pacific Heritage Museum, 608 Commercial St, San Francisco, CA 94111

Ongoing events

10am – 5pm

Exhibition | April 29 – October 23

Mother-of-Pearl Lacquerware from Korea

Asian Art Museum [Page 24](#)

📍 200 Larkin Street, San Francisco, CA 94102

10am – 5pm

Exhibition | September 23 – October 30

Gallery Route One “Far From Home” presents: Cynthia Tom | Stories to Tell: Discards & Variances

Gallery Route One [Page 35](#)

📍 11101 Highway One, Point Reyes Station, CA 94956

Continue on the next page

October 1

Saturday

10am – 2pm

Exhibition | September 1 – October 30

Selected Treasures from the Longshantang Collection

S. Bernstein & Co., Jade & Oriental Art [Page 49](#)

📍 950 Mason Street, San Francisco, CA 94108

11am – 4pm

Exhibition | September 30 – October 15

Literati Gathering: New Work by Wang Tiande

NanHai Art [Page 45](#)

📍 520 Broadway, Millbrae, CA 94030

11am – 5pm

Exhibition | August 28 – October 30

Art of Resilience and Identity, Stories of the Japanese American Incarceration

Peninsula Museum of Art [Page 48](#)

📍 1777 California Drive, Burlingame, CA 94010

11am – 9pm

Exhibition | July 27 – November 27

Buddhist Art from the Roof of the World

Berkeley Art Museum & Pacific Film Archive [Page 25](#)

📍 2155 Center Street, Berkeley, CA 94704

12pm – 4pm

Exhibition | September 30 – October 8

Exquisite Art Under Adverse Conditions: From the Japanese American Incarceration Camps: 1942/1945

Japanese American Museum of San Jose [Page 41](#)

📍 535 North Fifth Street, San Jose, CA 95112

12pm – 6pm

Exhibition | September 30 – October 31

Animal Expressions: Homage to our Greatest Companions

International Art Gallery [Page 39](#)

📍 1581 Webster Street, Suite #202, San Francisco, CA 94115

12am – 12am

Exhibition | April 4 – October 25

From Print to Plate: Views of the East on Transferware

SFO Museum [Page 52](#)

📍 SFO, International Terminal (A2), San Francisco, CA 94110

October 2

Sunday

Special events

3:30pm–6:30pm

Performance

Dance Culture and Regalia of Central Asia

Afsaneh Art & Culture Society – Ballet Afsane [Page 20](#)

📍 2525 8th Street, Suite #16, Berkeley, CA 94710

Ongoing events

10am – 5pm

Exhibition | April 29 – October 23

Mother-of-Pearl Lacquerware from Korea

Asian Art Museum [Page 24](#)

📍 200 Larkin Street, San Francisco, CA 94102

10am – 4pm

Exhibition | September 29 – October 8

Contemporati

Contemporati Studios [Page 33](#)

📍 Pacific Heritage Museum, 608 Commercial St, San Francisco, CA 94111

10am – 5pm

Exhibition | September 23 – October 30

Gallery Route One “Far From Home” presents: Cynthia Tom | Stories to Tell: Discards & Variances

Gallery Route One [Page 35](#)

📍 11101 Highway One, Point Reyes Station, CA 94956

11am – 5pm

Exhibition | August 28 – October 30

Art of Resilience and Identity, Stories of the Japanese American Incarceration

Peninsula Museum of Art [Page 48](#)

📍 1777 California Drive, Burlingame, CA 94010

11am – 7pm

Exhibition | July 27 – November 27

Buddhist Art from the Roof of the World

Berkeley Art Museum & Pacific Film Archive [Page 25](#)

📍 2155 Center Street, Berkeley, CA 94704

12pm – 4pm

Exhibition | September 30 – October 8

Exquisite Art Under Adverse Conditions: From the Japanese American Incarceration Camps: 1942/1945

Japanese American Museum of San Jose [Page 41](#)

📍 535 North Fifth Street, San Jose, CA 95112

12am – 12am

Exhibition | April 4 – October 25

From Print to Plate: Views of the East on Transferware

SFO Museum [Page 52](#)

📍 SFO, International Terminal (A2), San Francisco, CA 94110

October 3

Monday

Ongoing events

8:30am – 5pm

Exhibition | October 3 – October 27

Liquid Stories**Inner Eye Arts** [Page 36](#)

📍 Lindsay Dirkx Brown Gallery, 12501 Alcosta Blvd
San Ramon, CA 94583

10am – 4pm

Exhibition | September 29 – October 8

Contemporati**Contemporati Studios** [Page 33](#)

📍 Pacific Heritage Museum, 608 Commercial St, San Francisco, CA 94111

10am – 5pm

Exhibition | September 23 – October 30

Gallery Route One “Far From Home” presents: Cynthia Tom | Stories to Tell: Discards & Variances**Gallery Route One** [Page 35](#)

📍 11101 Highway One, Point Reyes Station, CA 94956

11am – 4pm

Exhibition | September 30 – October 15

Literati Gathering: New Work by Wang Tiande**NanHai Art** [Page 45](#)

📍 520 Broadway, Millbrae, CA 94030

10am – 4pm

Exhibition | September 1 – October 30

Selected Treasures from the Longshantang Collection**S. Bernstein & Co., Jade & Oriental Art** [Page 49](#)

📍 950 Mason Street, San Francisco, CA 94108

12am – 12am

Exhibition | April 4 – October 25

From Print to Plate: Views of the East on Transferware**SFO Museum** [Page 52](#)

📍 SFO, International Terminal (A2), San Francisco, CA 94110

1pm – 6pm

Other | September 30 – October 16

APAture 2016: Here**Kearny Street Workshop** [Page 42](#)

📍 1246 Folsom Street, San Francisco, CA 94103

October 4

Tuesday

Special events

3pm – 6pm

Lecture

Mongolian Calligraphy and Scripts

Institute of East Asian Studies, UC Berkeley [Page 37](#)

The Mongolia Foundation [Page 56](#)

📍 208 Library Ct (180 Doe Library), Berkeley, CA 94720

Ongoing events

8:30am – 5pm

Exhibition | October 3 – October 27

Liquid Stories

Inner Eye Arts [Page 36](#)

📍 Lindsay Dirks Brown Gallery, 12501 Alcosta Blvd, San Ramon, CA 94583

9:30am – 5pm

Auction | October 4 – October 16

Important Asian Works of Art Auction

Clars Auction Gallery [Page 32](#)

📍 5644 Telegraph Avenue, Oakland, CA 94609

10am – 5pm

Exhibition | April 29 – October 23

Mother-of-Pearl Lacquerware from Korea

Asian Art Museum [Page 24](#)

📍 200 Larkin Street, San Francisco, CA 94102

10am – 4pm

Exhibition | September 29 – October 8

Contemporati

Contemporati Studios [Page 33](#)

📍 Pacific Heritage Museum, 608 Commercial St, San Francisco, CA 94111

11am – 4pm

Exhibition | September 30 – October 15

Literati Gathering: New Work by Wang Tiande

NanHai Art [Page 45](#)

📍 520 Broadway, Millbrae, CA 94030

10am – 4pm

Exhibition | September 1 – October 30

Selected Treasures from the Longshantang Collection

S. Bernstein & Co., Jade & Oriental Art [Page 49](#)

📍 950 Mason Street, San Francisco, CA 94108

11am – 5pm

Exhibition | August 28 – October 30

Art of Resilience and Identity, Stories of the Japanese American Incarceration

Peninsula Museum of Art [Page 48](#)

📍 1777 California Drive, Burlingame, CA 94010

Continue on the next page

October 4

Tuesday

12pm – 6pm

Exhibition | September 30 – October 31

Animal Expressions: Homage to our Greatest Companions
International Art Gallery [Page 39](#)

📍 1581 Webster Street, Suite #202, San Francisco, CA 94115

12am – 12am

Exhibition | April 4 – October 25

From Print to Plate: Views of the East on Transferware
SFO Museum [Page 52](#)

📍 SFO, International Terminal (A2), San Francisco, CA 94110

October 5

Wednesday

Special events

10am – 1pm

Other

Asian Art Appraisal Event

Michaan's Auctions [Page 44](#)

📍 2751 Todd Street, Alameda, CA 94501

Ongoing events

8:30am – 5pm

Exhibition | October 3 – October 27

Liquid Stories

Inner Eye Arts [Page 36](#)

📍 Lindsay Dirkx Brown Gallery, 12501 Alcosta Blvd, San Ramon, CA 94583

9:30am – 5pm

Auction | October 4 – October 16

Important Asian Works of Art Auction

Clars Auction Gallery [Page 32](#)

📍 5644 Telegraph Avenue, Oakland, CA 94609

10am – 5pm

Exhibition | April 29 – October 23

Mother-of-Pearl Lacquerware from Korea

Asian Art Museum [Page 24](#)

📍 200 Larkin Street, San Francisco, CA 94102

10am – 4pm

Exhibition | September 29 – October 8

Contemporati

Contemporati Studios [Page 33](#)

📍 Pacific Heritage Museum, 608 Commercial St, San Francisco, CA 94111

10am – 5pm

Exhibition | September 23 – October 30

Gallery Route One "Far From Home" presents: Cynthia Tom | Stories to Tell: Discards & Variances

Gallery Route One [Page 35](#)

📍 11101 Highway One, Point Reyes Station, CA 94956

11am – 4pm

Exhibition | September 30 – October 15

Literati Gathering: New Work by Wang Tiande

NanHai Art [Page 45](#)

📍 520 Broadway, Millbrae, CA 94030

10am – 4pm

Exhibition | September 1 – October 30

Selected Treasures from the Longshantang Collection

S. Bernstein & Co., Jade & Oriental Art [Page 49](#)

📍 950 Mason Street, San Francisco, CA 94108

Continue on the next page

October 5

Wednesday

- 11am – 5pm

Exhibition | August 28 – October 30

Art of Resilience and Identity, Stories of the Japanese American Incarceration

Peninsula Museum of Art [Page 48](#)

📍 1777 California Drive, Burlingame, CA 94010
- 11am – 7pm

Exhibition | July 27 – November 27

Buddhist Art from the Roof of the World

Berkeley Art Museum & Pacific Film Archive [Page 25](#)

📍 2155 Center Street, Berkeley, CA 94704
- 12pm – 6pm

Exhibition | September 30 – October 31

Animal Expressions: Homage to our Greatest Companions

International Art Gallery [Page 39](#)

📍 1581 Webster Street, Suite #202, San Francisco, CA 94115
- 1pm – 6pm

Other | September 30 – October 16

APAture 2016: Here

Kearny Street Workshop [Page 42](#)

📍 1246 Folsom Street, San Francisco, CA 94103
- 12am – 12am

Exhibition | April 4 – October 25

From Print to Plate: Views of the East on Transferware

SFO Museum [Page 52](#)

📍 SFO, International Terminal (A2), San Francisco, CA 94110

October 6

Thursday

Special events

12pm – 1:30pm

Lecture

Beethoven in China

Center for East Asian Studies, Stanford University [Page 28](#)

📍 518 Memorial Way, Room 224, Stanford, CA 94305

6:30pm – 9pm

Exhibition | Opening Reception

ArtLaunch Party & SF Open Studios

ArtSpan [Page 21](#)

📍 934 Brannan Street, San Francisco, CA 94103

7pm – 8pm

Exhibition | Opening Reception

Beauty – Cooper Hewitt Design Triennial

San Jose Museum of Art [Page 51](#)

📍 110 South Market St, San Jose, CA 95113

Ongoing events

8:30am – 5pm

Exhibition | October 3 – October 27

Liquid Stories

Inner Eye Arts [Page 36](#)

📍 Lindsay Dirks Brown Gallery, 12501 Alcosta Blvd, San Ramon, CA 94583

9:30am – 5pm

Auction | October 4 – October 16

Important Asian Works of Art Auction

Clars Auction Gallery [Page 32](#)

📍 5644 Telegraph Avenue, Oakland, CA 94609

10am – 9pm

Exhibition | April 29 – October 23

Mother-of-Pearl Lacquerware from Korea

Asian Art Museum [Page 24](#)

📍 200 Larkin Street, San Francisco, CA 94102

10am – 4pm

Exhibition | September 29 – October 8

Contemporati

Contemporati Studios [Page 33](#)

📍 Pacific Heritage Museum, 608 Commercial St, San Francisco, CA 94111

10am – 5pm

Exhibition | September 23 – October 30

Gallery Route One “Far From Home” presents: Cynthia Tom | Stories to Tell: Discards & Variances

Gallery Route One [Page 35](#)

📍 11101 Highway One, Point Reyes Station, CA 94956

Continue on the next page

October 6

Thursday

10am – 4pm

Exhibition | September 1 – October 30

Selected Treasures from the Longshantang Collection

S. Bernstein & Co., Jade & Oriental Art [Page 49](#)

📍 950 Mason Street, San Francisco, CA 94108

11am – 4pm

Exhibition | September 30 – October 15

Literati Gathering: New Work by Wang Tiande

NanHai Art [Page 45](#)

📍 520 Broadway, Millbrae, CA 94030

11am – 5pm

Exhibition | August 28 – October 30

Art of Resilience and Identity, Stories of the Japanese American Incarceration

Peninsula Museum of Art [Page 48](#)

📍 1777 California Drive, Burlingame, CA 94010

11am – 7pm

Exhibition | July 27 – November 27

Buddhist Art from the Roof of the World

Berkeley Art Museum & Pacific Film Archive [Page 25](#)

📍 2155 Center Street, Berkeley, CA 94704

12pm – 4pm

Exhibition | September 30 – October 8

Exquisite Art Under Adverse Conditions: From the Japanese American Incarceration Camps: 1942/1945

Japanese American Museum of San Jose [Page 41](#)

📍 535 North Fifth Street, San Jose, CA 95112

12pm – 6pm

Exhibition | September 30 – October 31

Animal Expressions: Homage to our Greatest Companions

International Art Gallery [Page 39](#)

📍 1581 Webster Street, Suite #202, San Francisco, CA 94115

1pm – 6pm

Other | September 30 – October 16

APAture 2016: Here

Kearny Street Workshop [Page 42](#)

📍 1246 Folsom Street, San Francisco, CA 94103

12am – 12am

Exhibition | April 4 – October 25

From Print to Plate: Views of the East on Transferware

SFO Museum [Page 52](#)

📍 SFO, International Terminal (A2), San Francisco, CA 94110

October 7

Friday

Special events

10:30am–12:30pm

Lecture

Warhol & Mid-Century Modernisms: Art is Anything You Can Get Away With

Society for Asian Art [Page 54](#)

📍 200 Larkin Street, San Francisco, CA 94102

6pm – 9pm

Exhibition | Opening Reception

“First Fridays” at OACC Celebrates Filipino American Heritage Month

Oakland Asian Cultural Center [Page 47](#)

📍 388 Ninth Street, Suite 290, Oakland, CA 94607

7pm – 9pm

Artist Talk

Subterranean Ghosts: India’s Vanishing Stepwells

Society for Art & Cultural Heritage of India [Page 53](#)

📍 Palo Alto Art Center, 1313 Newell Road, Palo Alto, CA 94303

Ongoing events

8:30am – 5pm

Exhibition | October 3 – October 27

Liquid Stories

Inner Eye Arts [Page 36](#)

📍 Lindsay Dirkx Brown Gallery, 12501 Alcosta Blvd, San Ramon, CA 94583

9:30am – 5pm

Auction | October 4 – October 16

Important Asian Works of Art Auction

Clars Auction Gallery [Page 32](#)

📍 5644 Telegraph Avenue, Oakland, CA 94609

10am – 5pm

Exhibition | April 29 – October 23

Mother-of-Pearl Lacquerware from Korea

Asian Art Museum [Page 24](#)

📍 200 Larkin Street, San Francisco, CA 94102

10am – 4pm

Exhibition | September 29 – October 8

Contemporati

Contemporati Studios [Page 33](#)

📍 Pacific Heritage Museum, 608 Commercial St, San Francisco, CA 94111

10am – 5pm

Exhibition | September 23 – October 30

Gallery Route One “Far From Home” presents: Cynthia Tom | Stories to Tell: Discards & Variances

Gallery Route One [Page 35](#)

📍 11101 Highway One, Point Reyes Station, CA 94956

Continue on the next page

October 7

Friday

11am – 4pm

Exhibition | September 30 – October 15

Literati Gathering: New Work by Wang Tiande

NanHai Art [Page 45](#)

📍 520 Broadway, Millbrae, CA 94030

10am – 4pm

Exhibition | September 1 – October 30

Selected Treasures from the Longshantang Collection

S. Bernstein & Co., Jade & Oriental Art [Page 49](#)

📍 950 Mason Street, San Francisco, CA 94108

11am – 5pm

Exhibition | October 7 – February 19

Beauty – Cooper Hewitt Design Triennial

San Jose Museum of Art [Page 51](#)

📍 110 South Market St, San Jose, CA 95113

11am – 5pm

Exhibition | August 28 – October 30

Art of Resilience and Identity, Stories of the Japanese American Incarceration

Peninsula Museum of Art [Page 48](#)

📍 1777 California Drive, Burlingame, CA 94010

11am – 9pm

Exhibition | July 27 – November 27

Buddhist Art from the Roof of the World

Berkeley Art Museum & Pacific Film Archive [Page 25](#)

📍 2155 Center Street, Berkeley, CA 94704

12pm – 4pm

Exhibition | September 30 – October 8

Exquisite Art Under Adverse Conditions: From the Japanese American Incarceration Camps: 1942/1945

Japanese American Museum of San Jose [Page 41](#)

📍 535 North Fifth Street, San Jose, CA 95112

12pm – 6pm

Exhibition | September 30 – October 31

Animal Expressions: Homage to our Greatest Companions

International Art Gallery [Page 39](#)

📍 1581 Webster Street, Suite #202, San Francisco, CA 94115

12pm – 7pm

Exhibition | October 7 – November 6

ArtLaunch: SF Open Studios

ArtSpan [Page 21](#)

📍 934 Brannan Street, San Francisco, CA 94103

12am – 12am

Exhibition | April 4 – October 25

From Print to Plate: Views of the East on Transferware

SFO Museum [Page 52](#)

📍 SFO, International Terminal (A2), San Francisco, CA 94110

October 8

Saturday

Special events

10am – 5pm

Auction

Asian Works of Art Auction

Michaan's Auctions [Page 44](#)

📍 2751 Todd Street, Alameda, CA 94501

10am – 11pm

Other

Chinatown Art Walk

Chinese Culture Center [Page 29](#)

📍 750 Kearny Street, 3rd Floor, San Francisco, CA 94501

11am – 4pm

Lecture

The Beautiful Art of Arabic Calligraphy

Islamic Art Exhibit [Page 40](#)

📍 Martin Luther King Jr. Library, 150 E San Fernando St, San Jose, CA 94539

2pm – 4pm

Exhibition | Opening Reception

Liquid Stories

Inner Eye Arts [Page 36](#)

📍 Lindsay Dirkx Brown Gallery, 12501 Alcosta Blvd, San Ramon, CA 94583

Ongoing events

10am – 5pm

Exhibition | April 29 – October 23

Mother-of-Pearl Lacquerware from Korea

Asian Art Museum [Page 24](#)

📍 200 Larkin Street, San Francisco, CA 94102

10am – 4pm

Exhibition | September 29 – October 8

Contemporati

Contemporati Studios [Page 33](#)

📍 Pacific Heritage Museum, 608 Commercial St, San Francisco, CA 94111

10am – 5pm

Exhibition | September 23 – October 30

Gallery Route One “Far From Home” presents: Cynthia Tom | Stories to Tell: Discards & Variances

Gallery Route One [Page 35](#)

📍 11101 Highway One, Point Reyes Station, CA 94956

10am – 2pm

Exhibition | September 1 – October 30

Selected Treasures from the Longshantang Collection

S. Bernstein & Co., Jade & Oriental Art [Page 49](#)

📍 950 Mason Street, San Francisco, CA 94108

Continue on the next page

October 8

Saturday

11am – 4pm

Exhibition | September 30 – October 15

Literati Gathering: New Work by Wang Tiande

NanHai Art [Page 45](#)

📍 520 Broadway, Millbrae, CA 94030

11am – 5pm

Exhibition | August 28 – October 30

Art of Resilience and Identity, Stories of the Japanese American Incarceration

Peninsula Museum of Art [Page 48](#)

📍 1777 California Drive, Burlingame, CA 94010

11am – 5pm

Exhibition | October 7 – February 19

Beauty – Cooper Hewitt Design Triennial

San Jose Museum of Art [Page 51](#)

📍 110 South Market St, San Jose, CA 95113

11am – 9pm

Exhibition | July 27 – November 27

Buddhist Art from the Roof of the World

Berkeley Art Museum & Pacific Film Archive [Page 25](#)

📍 2155 Center Street, Berkeley, CA 94704

11am – 5pm

Exhibition | October 7 – November 6

ArtLaunch: SF Open Studios

ArtSpan [Page 21](#)

📍 934 Brannan Street, San Francisco, CA 94103

12pm – 4pm

Exhibition | September 30 – October 8

Exquisite Art Under Adverse Conditions: From the Japanese American Incarceration Camps: 1942/1945

Japanese American Museum of San Jose [Page 41](#)

📍 535 North Fifth Street, San Jose, CA 95112

12pm – 6pm

Exhibition | September 30 – October 31

Animal Expressions: Homage to our Greatest Companions

International Art Gallery [Page 39](#)

📍 1581 Webster Street, Suite #202, San Francisco, CA 94115

12am – 12am

Exhibition | April 4 – October 25

From Print to Plate: Views of the East on Transferware

SFO Museum [Page 52](#)

📍 SFO, International Terminal (A2), San Francisco, CA 94110

Participants & Partners

| | |
|--|---------|
| Afsaneh Art & Culture Society - Ballet Afsane | Page 20 |
| ArtSpan | Page 21 |
| Asia Society Northern California | Page 23 |
| Asian Art Museum | Page 24 |
| Berkeley Art Museum & Pacific Film Archive | Page 25 |
| Bonhams | Page 26 |
| Center for Asian American Media | Page 27 |
| Center for East Asian Studies, Stanford University | Page 28 |
| Chinese Culture Center | Page 29 |
| Chinese Historical Society of America Museum | Page 30 |
| Christie's | Page 31 |
| Clars Auction Gallery | Page 32 |
| Contemporati Studios | Page 33 |
| Fine Arts Gallery at SF State | Page 34 |
| Gallery Route One | Page 35 |
| Inner Eye Arts | Page 36 |
| Institute of East Asian Studies, UC Berkeley | Page 37 |
| International Art Gallery | Page 39 |
| Islamic Art Exhibit | Page 40 |
| Japanese American Museum of San Jose | Page 41 |
| Kearny Street Workshop | Page 42 |
| Korean Center | Page 43 |
| Michaan's Auctions | Page 44 |
| NanHai Art | Page 45 |
| Oakland Asian Cultural Center | Page 47 |
| Peninsula Museum of Art | Page 48 |
| S. Bernstein & Co., Jade & Oriental Art | Page 49 |
| San Francisco Art Institute | Page 50 |
| San Jose Museum of Art | Page 51 |
| SFO Museum | Page 52 |
| Society for Art & Cultural Heritage of India | Page 53 |
| Society for Asian Art | Page 54 |
| The Mongolia Foundation | Page 55 |



Afsaneh Art & Culture Society - Ballet Afsane

📍 PO Box 1104
Woodacre, CA 94973
☎ (415) 488-0944

✉ info@dancesilkroad.org
🌐 www.dancesilkroad.org



3:30pm - 6:30pm

Sunday, October 2 | Performance | Exhibition | Dance Participation

📍 Studio 8, 2525 8th Street, Suite #16, Berkeley, CA 94710

Dance Culture and Regalia of Central Asia

Dance and hand crafted traditional costumes of Central Asia from the Ballet Afsaneh collection will be on exhibit at the studio headquarters - Studio 8 in Berkeley.

Enjoy informal artist talks, dance performances and an opportunity to learn family friendly traditional dances from Afghanistan, Iran, Tajikistan and more.



Hours
By Appointment

On the Map

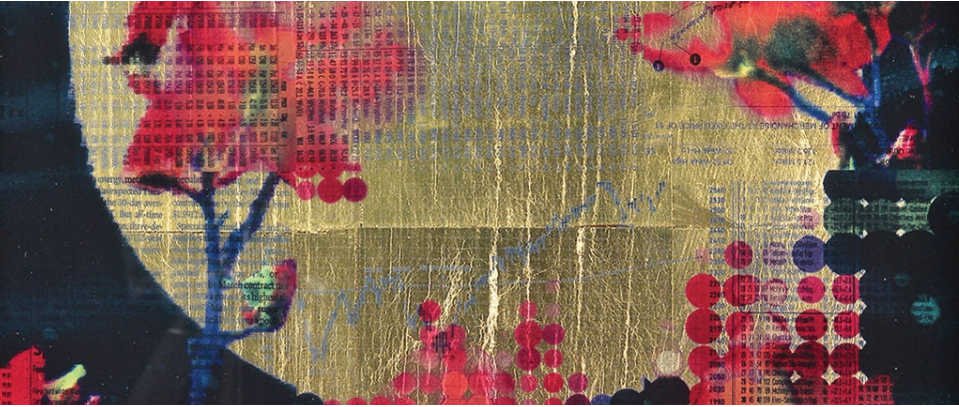
2



ArtSpan

934 Brannan Street
San Francisco, CA 94103
(415) 861-9838

info@artspan.org
www.artspan.org



Organizations

6:30pm – 9pm

Thursday, October 6 | Opening Reception | Exhibition

ArtLaunch Party & SF Open Studios

ArtLaunch, on Thursday, October 6th, 2016, is the official kick-off party for ArtSpan's city-wide, month-long SF Open Studios event at the SF Open Studios Exhibition at SOMArts Cultural Center featuring the artwork of 450+ Bay Area artists.

SF Open Studios, the oldest and largest open studios program in the country showcases over 800 emerging and established San Francisco artists in their studios in October and November each year. The event connects collectors with artists for engaging dialogue and a glimpse into the life of the working artist; SF Open Studios simultaneously helps artists build their mailing list, gain new admirers, and ultimately sustain a living making art. Visitors will discover an authentic connection to the art community and artwork in myriad forms, from painting, photography, and printmaking to glass, metal sculpture, and more.

📅 October 7 – November 6 | Ongoing Event

Continue on the next page



Hours
Monday through Saturday
10am – 6pm

On the Map 22

11am – 6pm

October 15 – October 16 | Open Studios

📍 Hunters Point Shipyard & Islais Creek Studios

Weekend 1

11am – 6pm

October 22 – October 23 | Open Studios

📍 Fort Mason, Marina, Pacific Heights, Russian Hill, North Beach, Downtown, Tenderloin, MIDMA, SOMA, Western Addition, NOPA, Hayes Valley, Lower Haight, Potrero Hill, Dogpatch, Bayview

Weekend 2

- Taiko Fujimura @ The Journal Building, 1540 Market Street.

More information: www.artspan.org/artist/taikofujimura

- Phillip Hua @ Bayview Opera House, 4705 3rd Street.

More information: www.artspan.org/artist/philliphua

- Lena Shey @ The Journal Building, 1540 Market Street.

More information: www.artspan.org/artist/lenashey

11am – 6pm

October 29 – October 30 | Open Studios

📍 Presidio, Richmond, Upper Haight, Buena Vista, Cole Valley, Sunset, Ocean View, West Portal, Portola, Excelsior, Balboa Park

Weekend 3

11am – 6pm

November 5 – November 6 | Open Studios

📍 Mission, Castro, Bernal Heights, Noe Valley, Upper Market, Glen Park

Weekend 4

- Phillip Hua @ Pacific Felt Factory, 2830 20th Street.

More Information: www.artspan.org/artist/philliphua

- Jary Niebur @ Art Explosion - 17th Street Studios, 2425 17th Street.

More Information: www.artspan.org/artist/jaryniebur

- Suchitra Sharma @ Art Explosion - 17th Street Studios, 2425 17th Street.

More information: www.artspan.org/artist/SuchitraSharma

- J-Wo @ Art Saves Lives Studio and Gallery, 518a Castro Street.

More information: www.artspan.org/artist/JWoWoodyWoot



1:30pm – 5:30pm

Friday, September 30 | Symposium

📍 NanHai Auditorium, 510 Broadway, Suite 302, Millbrae, CA 94030

Issues in Connoisseurship for Collectors of Asian Art Asia Week San Francisco Bay Area Annual Symposium

In conjunction with Asia Week San Francisco Bay Area (Asia Week-SFBA) and jointly sponsored by NanHai Art, Christie's, and Asia Society Northern California, the 2016 Asia Week- SFBA Symposium brings together connoisseurs, curators, and scholars, for an informative and interactive discussion on the issues in connoisseurship for collectors of Asian Art.

This two-panel symposium is designed to examine connoisseurship, a central yet complicated field from a practical perspective. Covering a wide range of historical and geographical contexts, panelists will use a series of case studies to discuss and share their insights on issues of authenticity, attribution, and quality, in paintings and other works of art. In addition, the symposium will also discuss the scope and effectiveness of connoisseurship, and the influences of both academic trends and technology development towards its practice.



Hours
Monday through Friday
9am – 6pm

On the Map **12**



Asian Art Museum

📍 200 Larkin Street
San Francisco, CA 94102
☎ (415) 581-3500

✉ pr@asianart.org
🌐 www.asianart.org



10am – 5pm

Exhibition

Mother-of-Pearl Lacquerware from Korea

On a background of sleek lacquer, mother-of-pearl illuminates intricate flowers, swirling leaves and birds poised to fly. This ornate art has been practiced in Korea for over a thousand years, but it hasn't been extensively studied or displayed in the United States. Now, learn about luminous Korean mother-of-pearl lacquerware with the first U.S. exhibition devoted to this time-honored tradition. Through 30 radiant objects, many on view for the first time, you'll discover the painstaking techniques used to create a flawless, gleaming surface filled with almost microscopic details. You'll also get a close-up look at abalone shell, the stunning natural phenomenon that gives these works their iridescent luster. And an in-gallery video will share the conservation procedures that preserve the art's beauty and integrity.

The works featured in this exhibition are mostly drawn from the museum's collection, in addition to objects on loan from the Los Angeles County Museum of Art and the Metropolitan Museum of Art. A related display of five contemporary artworks of various mediums can be found in the adjacent Korean art galleries. Influenced by traditional Korean mother-of-pearl lacquerware, these works demonstrate the vitality of this vibrant art form today.

📅 April 29 – October 23 | Ongoing Event



Hours

Tuesday through Sunday
10am – 5pm, Thursday 10am – 9pm

On the Map 16



Berkeley Art Museum & Pacific Film Archive

📍 2155 Center Street
Berkeley, CA 94720
☎ (510) 642-0808

✉ bampfa@berkeley.edu
🌐 www.bampfa.org



Museums

11am – 9pm

Exhibition

Buddhist Art from the Roof of the World

Artists from India, Tibet, and Nepal have for centuries created sculptures and paintings as a window into a divine Buddhist reality. Buddhist Art from the Roof of the World explores the spiritual meaning of over thirty exceptional works, highlighting their role within the Buddhist doctrine. The centerpiece of the exhibition is a rare fourteenth-century monumental gilt-bronze Buddha from Tibet seated in the posture of meditation; with the right hand touching the earth, the sculpture manifests the moment of enlightenment. Other sculptures and paintings from the region depict a multitude of sublime deities, some fierce and others calming, but all intended to lead the viewer closer to perfect knowledge of the universe through the teachings of wisdom and compassion.

📅 July 27 – November 27 | Ongoing Event



Hours

Wednesday, Thursday, Sunday 11am – 7pm
Friday and Saturday 11am – 9pm

On the Map

5

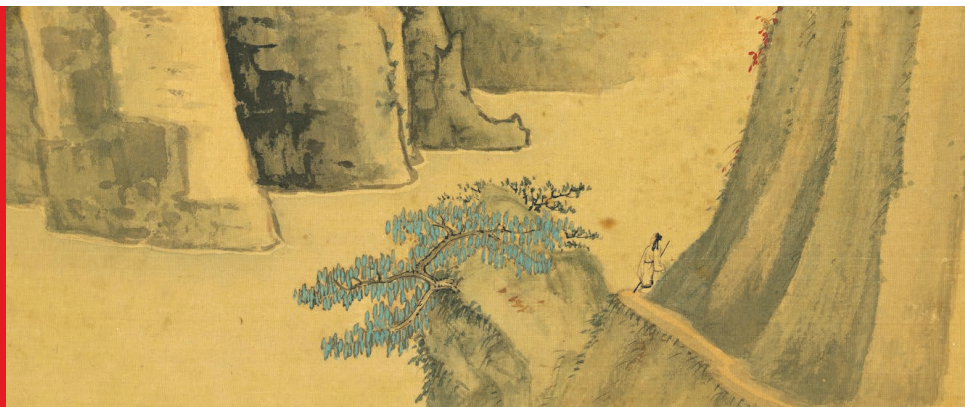
Bonhams

Bonhams

📍 220 San Bruno Avenue
San Francisco, CA 94103
📞 (415) 503-3358

✉️ angela.lee@bonhams.com
🌐 www.bonhams.com

Auction Houses



10am – 5pm

Tuesday, October 18 | Auction

Asian Decorative Arts

Previews 10am-5pm

From 10am start of auction



Hours

Monday through Friday
9am – 5pm

On the Map 23



Center for Asian American Media

📍 145 Ninth Street, Suite 350
San Francisco, CA 94108
☎ (415) 863-0814

✉ festival@caamedia.org
🌐 www.caamedia.org



Organizations

Other

CAAMFest 2017 Call for Entries Now Open!

CAAMFest is the nation's largest showcase for new Asian and Asian American films, presenting approximately 130 works in San Francisco, Berkeley and Oakland. Since 1982, the annual festival has been an important launching point for Asian American independent filmmakers as well as a vital source for new Asian cinema.

Please visit CAAM's website for details.

📅 August 22 – October 3 | Ongoing Event

On the Map 21

How the great
composer became
an icon in the
People's Republic



Beethoven in China

JINDONG CAI AND
SHEILA MELVIN

12pm – 1:30pm

Thursday, October 6 | Lecture

📍 518 Memorial Way, Room 224, Stanford, CA 94305

Beethoven in China

At the turn of the twentieth century, the foundations of traditional Chinese society were crumbling. Many patriotic and idealistic young people went overseas to seek inspiration and education, determined to learn from the outside world and forge a new path forward for China. Beethoven was introduced to China during this period by a series of remarkable artists and intellectuals who learned about the composer while studying in Japan. Xiao Youmei was the first Chinese to bring the sound of Beethoven to Chinese people. After his studies in Japan and Germany, Xiao came back to China in 1921 and began promoting music education at Peking University, where he created the first Chinese symphony orchestra to perform Beethoven's music. Since then, Beethoven has become an iconic figure in China and played a role in many major historical events from the May Fourth Movement to the normalization of US-China relations. Beethoven became a hero to reformers, intellectuals, music lovers, and party cadres alike. The new Penguin Special "Beethoven in China," by Stanford professor and orchestra conductor Jindong Cai and culture journalist Sheila Melvin tells the compelling story of Beethoven and the Chinese people.



Hours
Monday through Saturday
10am – 5pm

On the Map **31**

Chinese Culture Center

📍 750 Kearny St, 3rd Floor
San Francisco, CA 94501
☎ (415) 986-1822

✉ darin@c-c-c.org
🌐 www.c-c-c.org



10am – 11pm

Friday, September 30 / Saturday, October 1 / Saturday, October 8 | Other

Chinatown Art Walk

As part of the “Building Our Town” movement, CCC has helped to foster a vibrant resurgence of public art in Chinatown that brings together the creativity and thoughtfulness of residents with local and international artists.

2pm – 3pm

Saturday, October 1 | Artist Talk

Artist Panel Discussion: Mind Flows with Brush - Zhong Yueying's Transcultural Practices in Art

The Chinese Culture Center of San Francisco is pleased to present Mind Flows With Brush - part of Episode, a continuing series of exhibitions featuring guest curators, collectors, and community organizations. The exhibition is curated by Professor Qian Zhijian, Assistant Professor of Art History at City University of New York. Mind Flows With Brush features the ink-based works of Zhong Yueying, an artist based in the San Francisco Bay Area. Instead of manipulating the ink, the artist allows the brush to take unpredicted journeys, flowing freely, leaving hand and mind unrestrained. Mind Flows With Brush presents a sensational, cartographic experience, mapping the new continent located within one's inner universe.



Hours
Tuesday through Saturday
10am – 4pm

On the Map 13



CHINESE
HISTORICAL
SOCIETY OF
AMERICA

Chinese Historical Society of America Museum

965 Clay Street
San Francisco, CA 94108
(415) 391-1188

info@chsa.org
www.chsa.org



The Chinese Historical Society of America Museum is the oldest organization in the country dedicated to the interpretation, promotion, and preservation of the social, cultural and political history and contributions of the Chinese in America.

When founded in 1963, there were fewer than 250,000 people of Chinese descent living in the US and CHSA was a lone voice for the study and dissemination of the history of this segment of the US population. Today, as the number of Chinese in the US has risen to nearly 4 million, CHSA strives to be a responsible steward of the remarkable narrative of this rapidly growing and increasingly visible community.



Hours
By Appointment
10am – 5pm

On the Map 14

CHRISTIE'S

Christie's

📍 400 Montgomery Street
Suite 920, SF, CA 94104
☎ (415) 982-0982

✉ sf@christies.com
🌐 www.christies.com



WU HUFAN (1894-1968)
COASTAL LANDSCAPE
Scroll, mounted and framed, ink and color on paper
Entitled, inscribed, and signed by the artist, with two seals
Dated seventh month, *jiaxu* year (1934)
39 x 15.5 in. (99 x 40 cm.)

Auction Houses

1:30pm – 5:30pm

Friday, September 30 | Symposium

📍 NanHai Auditorium, 510 Broadway, Suite 302, Millbrae, CA 94030

Issues in Connoisseurship for Collectors of Asian Art Asia Week San Francisco Bay Area Annual Symposium

In conjunction with Asia Week San Francisco Bay Area (Asia Week-SFBA) and jointly sponsored by NanHai Art, Christie's, and Asia Society Northern California, the 2016 Asia Week-SFBA Symposium brings together connoisseurs, curators, and scholars, for an informative and interactive discussion on the issues in connoisseurship for collectors of Asian Art.

This two-panel symposium is designed to examine connoisseurship, a central yet complicated field from a practical perspective. Covering a wide range of historical and geographical contexts, panelists will use a series of case studies to discuss and share their insights on issues of authenticity, attribution, and quality, in paintings and other works of art. In addition, the symposium will also discuss the scope and effectiveness of connoisseurship, and the influences of both academic trends and technology development towards its practice.



Hours
Monday through Friday
10am – 5pm

On the Map 11



9:30am – 5pm

Tuesday, October 4 – Sunday, October 16 | Auction

Important Asian Works of Art Auction

Important Asian Art auction including property from important art organizations, and other collections, estates and institutions throughout the United States.



Hours
Monday through Friday
9am – 5pm

On the Map

6

Contemporati

Contemporati Studios

📍 1801 Wedemeyer #124
San Francisco, CA 94129
☎ (415) 858-4126

✉ info@contemporati.com
🌐 www.contemporati.com



Organizations

2pm – 4pm

Saturday, October 1 | Opening Reception | Exhibition

📍 Pacific Heritage Museum, 608 Commercial St, SF, CA 94111

Contemporati

Contemporati will celebrate and inspire the Chinese literati tradition in a new, contemporary way. The exhibit will feature innovative works by Master artist and poet Hou Beiren, Fong Chung Ray and scholar artists Prof. Zhou Shilin and Prof. Wang Xiaojie from Tianjin Fine Arts Academy.

📅 September 29 – October 8 | Ongoing Event



Hours
By Appointment
10am – 4pm

On the Map 17



1pm – 4pm

Saturday, October 22 | Artist Talk

SF State Taiwan Culture Series: JIMI 幾米 @SF STATE

The SF State Chinese Program is thrilled to present world-famous children's book author Jimi who will visit the SF State campus in late October of 2016! Jimi will deliver a public reading and meet with students of the local community. There will also be a public screening of *Starry Starry Night*, Tom Lin's 2011 fantasy drama based on an illustrated book by Jimi of the same name.

Jimi 幾米 (English name: Jimmy Liao) is Taiwan's most renowned children's book author and illustrator. He is the author of over forty books, and his work adorns Taiwanese postal stamps and subway cards. More recently, Jimi's status as one of the country's most beloved artists was paid homage to when the Nangang subway station in Taipei was entirely decorated with images from his books. While his many books by way of their colorful illustrations or monochrome drawings take the reader on magical journeys through marvelous dreamscapes, his work also probes into themes of urban alienation, friendship, and our own mortality. Event info: flagship.sfsu.edu



Hours
Tuesday through Saturday
11am – 5pm

On the Map 25



10am – 5pm

Exhibition

Gallery Route One “Far From Home” presents: Cynthia Tom | Stories to Tell: Discards & Variances

Cynthia Tom, the guest artist of Gallery Route One’s “Project Space” exhibition, creates an intimate 20’ x 16’ space. It is an installation that is at once beautiful and heartbreaking. It is an artistic exploration of the personal human trafficking experiences of her Chinese American heritage. Prior to the 1950’s these stories of trafficking and abuse were common in the S.F. Chinese community. Unfortunately these surrealistic narratives mirror stories being played out in the Bay Area today.

Her installation serves to wake us up by inspiring non-verbal conversations within our hearts, calling us all to action. Cynthia feels a strong artistic responsibility to create engaging modalities that share deep truths and spur us collectively into action. We are all connected.

Sep 25, 2016 Cynthia’s OnsiteTime 1-5pm, General Artists’ Reception 3-5pm, Artist’s Talk 2:30pm

Sep 25, 2016 Gen Recept 3-5pm, Artists’Talk 2:30pm | Oct 30 Artist Salon 4-5pm

📅 September 23 – October 30 | Ongoing Event



Hours

Monday 10am – 5pm

Wed, Thu, Fri, Sat and Sun 11am – 5pm

On the Map





2pm – 4pm

Saturday, October 8 | Opening Reception | Exhibition

📍 Lindsay Dirx Brown Gallery, 12501 Alcosta Blvd, San Ramon, CA 94583

Liquid Stories

Liquid Stories- Curated by Pallavi Sharma

The show brings together artists of Asian decent who are constantly exploring the new ways to comprehend the complexities of class, gender and ethnicity. They address the issues from multiple perspectives and challenge the traditional ideas of identity formation through new themes and innovative mediums. They constantly grapple with the depiction of intricate narratives, which move along with the human mind and body in the form of memories and experience.

Participating Artists: Lydia Nakashima Degarrod, Nirmal Raja, Indrani Nayar Gall, Judy Shintani, Samantha Chundur, Shailly Sharma Bhatnagar, Kelsay Myers, Reiko Fujji, Irene Wibawa, Shari DeBoer and Salma Arastu.

📅 October 3 – October 27 | Ongoing Event



Hours
Monday through Friday
8:30am – 5pm

On the Map 26



Institute of
East Asian Studies
University of California, Berkeley

Institute of East Asian Studies, UC Berkeley

📍 1995 University Avenue, Suites
510 and 520, Berkeley, CA 94720
☎ (510) 642-2809

✉ icas@berkeley.edu
🌐 icas.berkeley.edu



Institutions

4pm – 6pm
9am – 6pm

Thursday, September 29 | Symposium
Friday, September 30 | Symposium

📍 Charles Franklin Doe Memorial Library, University of California
Berkeley, Berkeley, CA 94720-6000

Thunder from the Steppes: New Perspectives on the Mongol Empire

An international gathering of Mongolia experts will discuss the critical role of the Mongol empire in creating connections that stretched across Eurasia, profoundly affecting the cultures of their conquered nations. What made possible the sudden and spectacular spread of Mongol power in the thirteen century? How was the world transformed, and how was Mongolian civilization itself transformed? With the help of sources that have only in recent decades become available, scholars re-evaluate the legacy of the Mongol empire.

Continue on the next page



Hours
Monday through Friday
9am – 5pm

On the Map 4

📍 180 Doe Library, 208 Library Ct, Berkeley, Berkeley, CA 94720

Mongolian Calligraphy and Scripts

This event introduces the history and art of Mongolian calligraphy. Mongolia scholar Brian Baumann, who teaches modern and Classical Mongolian language at UC Berkeley, will discuss and demonstrate the history and variety of scripts and writing systems in Mongolia. The Mongolian artist Jamyansuren will demonstrate the art of calligraphy and its specific features. An accompanying exhibit will demonstrate the richness of calligraphic tradition in Mongolia.

Co-sponsored by the Mongolia Foundation www.mongoliafoundation.org



International Art Gallery

📍 1581 Webster Street
Suite #202, SF, CA 94115
📞 (415) 567-4390

✉ tokaidoarts2000@yahoo.com
🌐 www.tokaidoarts.com



Galleries & Dealers

12pm – 6pm

Exhibition

Animal Expressions: Homage to our Greatest Companions

Selected original Japanese woodcut prints by artists including Hiroshige I, Yoshitoshi, Kiyoshi Saito, Nagayama and the Yoshidas.

Art has always depicted mankind's unique and intimate relationship with nature. Whether by its role as the warrior's loyal steed, their docile and comforting presence by the hearth, or through stories told of mythical, mysterious folklore passed down through the ages, animals prove to be inseparable from the human experience. Through art we honor this bond.

📅 September 30 – October 31 | Ongoing Event



Hours
Monday through Saturday
12pm – 6pm

On the Map 20



Islamic Art Exhibit

📍 760 Navajo Way
Fremont, CA 94539
☎ (510) 676-5357

✉ islamicartexhibit@gmail.com
🌐 www.islamicartexhibit.com



11am – 4pm

Saturday, October 8 | Lecture

📍 Martin Luther King Jr. Library, 150 E San Fernando Street,
San Jose, CA 94539

The Beautiful Art of Arabic Calligraphy

Traditional Arabic Style Calligraphy Lecture/Demonstration/Workshop
by a Master Calligrapher.

The tradition of Islamic Art has flourished throughout the world for 1400 years, with beautiful patterns and designs unique to the art manifested in forms such as architecture, calligraphy, painting and ceramics. In the modern world artists have new media to express their creativity while remaining true to Islamic art's origins.



Hours
By Appointment
10am – 5pm

On the Map 30



Japanese American Museum of San Jose

535 North Fifth Street
San Jose, CA 95112
(408) 294-3138

mail@jamsj.org
www.jamsj.org



Museum

12pm – 4pm

Exhibition

Exquisite Art Under Adverse Conditions: From the Japanese American Incarceration Camps: 1942/1945

Permanent Exhibit with a public awareness and outreach from September 30th through October 8th.

With the support of a National Park Service Grant, JAMSj has extensively remodeled and enhanced the section of the museum dedicated to the art and craft work created by many artisans who were incarcerated in the Japanese American incarceration camps during World War II. This major art exhibit captures the artistic essence of the forced mass removal and incarceration of some 120,000 people of Japanese descent from 1942 through 1945. Using natural material from the 10 desolate incarceration camps, the art work comes alive in a very naturalistic way reflecting the art of gaman, to endure the seemingly unbearable with patience and dignity. Please stop by and experience this unique exhibit.

September 30 – October 8 | Ongoing Event



Hours
Thursday through Sunday
12pm – 4pm

On the Map 32



Kearny Street Workshop

📍 PO Box 14545
San Francisco, CA 94114
📞 (415) 503-0520

✉ info@kearnystreet.org
🌐 www.kearnystreet.org



6pm – 10pm

Sunday, September 30 | Opening Reception

📍 1246 Folsom Street, San Francisco, CA 94103

APAture 2016: Here

APAture is Kearny Street Workshop's annual multidisciplinary arts festival celebrating emerging Asian and Pacific Islander artists of the Bay Area. For 15 years, APAture has been a site of dialogue, collaboration, and political action between artists and community members around contemporary issues affecting the Asian and Pacific Islander community. This year, our theme is "Here." We are interested in locations, spaces, homes; the way in which we move through and live in these places. We are interested in the intimacy of our bodies, our narratives, as they relate to being "here," and our histories, our continued presence, our dreams here. We are living in a pivotal historical moment, and have arrived here, together, each in our own ways.

📅 September 30 – October 16 | Ongoing Event



Hours

Monday through Thursday
1pm – 6pm

On the Map 24



Korean Center

📍 1362 Post Street
San Francisco, CA 94109
☎ (415) 441-1881

✉ info@koreancentersf.org
🌐 www.koreancentersf.org



1:30pm – 3:30pm

Saturday, October 1 | Hands On Activity

Making Small Coaster with Hanji

Hanji is a traditional Korean handmade paper which is made of mulberry tree. It has been famous for its natural color and durability. Our ancestor has used this for many daily products and for traditional door in Korean houses.

Korean center would like people to experience the beauty of Hanji with hands on activity. People will make small coaster with pre-cut Hanji by themselves and write names and favorites words in Korean on it. Instructors will tell them how to write their names/words in Korean at this activity.



Hours

Monday – Thursday 9am – 5:30pm
Friday 9am – 5pm

On the Map 18

MICHAAN'S AUCTIONS

Auctioneers & Appraisers

Michaan's Auctions

📍 2751 Todd Street
Alameda, CA 94501
☎ (510) 740-0220

✉ info@michaans.com
🌐 www.michaans.com



10am – 1pm

Wednesday, October 5 | Appraisal

Asian Art Appraisal Event

This event is by appointment only. Specialist will be offering on the spot auction evaluations on your Asian Works of Art. This event is an RSVP only event, please contact kim@michaans.com or call (510) 740-0220.

10am – 5pm

Saturday, October 8 | Auction

Asian Works of Art Auction

Previews:

Saturday, October 1

Sunday, October 2

Friday, October 7

Inquiries:

(510) 740-0220

harry@michaans.com



Hours

Monday through Saturday

10am – 5pm

On the Map

8



1:30pm – 5:30pm

Friday, September 30 | Symposium

NanHai Auditorium, 510 Broadway, Suite 302, Millbrae, CA 94030

Issues in Connoisseurship for Collectors of Asian Art Asia Week San Francisco Bay Area Annual Symposium

In conjunction with Asia Week San Francisco Bay Area (Asia Week-SFBA) and jointly sponsored by NanHai Art, Christie's, and Asia Society Northern California, the 2016 Asia Week- SFBA Symposium brings together connoisseurs, curators, and scholars, for an informative and interactive discussion on the issues in connoisseurship for collectors of Asian Art.

This two-panel symposium is designed to examine connoisseurship, a central yet complicated field from a practical perspective. Covering a wide range of historical and geographical contexts, panelists will use a series of case studies to discuss and share their insights on issues of authenticity, attribution, and quality, in paintings and other works of art. In addition, the symposium will also discuss the scope and effectiveness of connoisseurship, and the influences of both academic trends and technology development towards its practice.

Continue on the next page

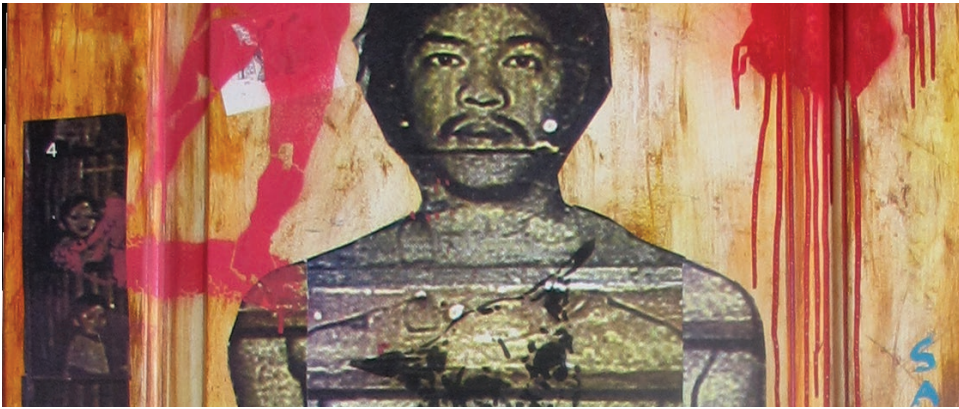


Hours
Monday through Friday
11am – 4pm

On the Map **28**

Literati Gathering: New Work by Wang Tiande

From the 1990s Wang Tiande has been one of the most representative artists of Chinese contemporary ink art, consistently using the concepts and media of ink painting in his work. His work has evolved from two-dimensional to three-dimensional, from traditional paper and ink to multi-media, and from conceptual transplantations to adoption of virtual space, continuously exploring the language of ink and its potential for spiritual expression. Comprehensively challenging old ideas to construct his own artistic language and style, he has emerged as unique. His work often takes its source in classical landscapes and calligraphy, choosing the paintings and writings of famous masters as references, but replacing their brushes with sticks of burning incense, and executing his images in a unique language. Unlike so many Ming and Qing master, his intention is not to composed landscapes for a mental journey. Instead he creates an even more expansive virtual space in which contemporary people can engage in dialogue and interchanges with both nature and the ancients, imbuing the landscape with a certain contemporaneity. This exhibition, “Literati Gathering,” shows a series of new works that form a dialogue with the paintings and calligraphy of the great twentieth century collector and artist Wu Hufan. By means of the artist’s virtual travel through time and space, he places the viewer in a double context of past and present, and creates a unique literati gathering.



6pm – 9pm

Friday, October 7 | Opening Reception | Artist Talk

“First Fridays” at OACC Celebrates Filipino American Heritage Month

October is Filipino American Heritage month, and OACC’s “First Friday” event will feature two exhibit receptions highlighting Filipino artists: One featuring Epekto Art Projects and the second exhibit featuring Henry Francisco and EmagnI on basketball/sneaker culture.

OACC’s “First Fridays” event series brings dynamic and free community programming for all ages to the heart of Oakland’s Chinatown from 6-9pm the first Friday of each month. Programming varies each month and has included free classes and workshops in various types of drumming, dance, and martial arts; games and crafts; panel discussions; open mic; exhibit openings; and other activities.



Hours

Wednesday 4:30pm–7:30pm

Saturday 10am – 5pm, Sunday 10am – 3pm

On the Map

7



Peninsula
Museum of Art

Peninsula Museum of Art

📍 1777 California Drive
Burlingame, CA 94010
☎ (650) 692-2101

✉ peninsulamuseum@gmail.com
🌐 www.peninsulamuseum.org



11am – 5pm

Exhibition

Art of Resilience and Identity, Stories of the Japanese American Incarceration

In a world where racial and gender discrimination is widespread, there is a danger of repeating the past. Judy Shintani's art illuminates family memories and repressed emotions concerning the unjust Japanese American incarceration during WWII. She offers a way to heal and understand historical trauma through art installation, sculpture, and interactive engagement.

📅 August 28 – October 30 | Ongoing Event



Hours
Wednesday through Sunday
11am – 5pm

On the Map 29

S. Bernstein & Co., Jade & Oriental Art

📍 950 Mason Street
San Francisco, CA 94108
☎ (415) 421-3434

✉ sbernsteinjade@aol.com
🌐 www.bernsteinjadeart.com



10am – 2pm

Exhibition

Selected Treasures from the Longshantang Collection

S. Bernstein & Co., Jade & Oriental Art as part of our Twenty-Fifth Anniversary celebration is pleased and honored to offer a special showing of selected treasures from the Longshantang (Dragon Mountain Pavillion) Collection. The collection consists primarily of jade objects for the scholar's desk including jade ink stones, brushwashers, objects of contemplation and vessels.

📅 September 1 - October 30 | Ongoing Event

10am – 3pm

Saturday, October 1 | Lecture

Jade Collecting in the Glorious Ming Dynasty

The Ming Dynasty (1368-1644) saw a dramatic increase in demand for luxury goods. Arguably the current modern taste in collecting jade owes its roots to the collecting ideals of Ming period artists, artisans and connoisseurs. Buyers of works of art were inundated with spurious objects made to satisfy the overwhelming demand by knowledgeable serious collectors and nouveaux riches alike. This lecture will highlight examples of jades produced during and for Ming period collectors. A Lecture by Sam Bernstein. To attend, please contact: Ms. Kelly Albrink at sbernsteinjade@aol.com or at (415) 421-3434



Hours

Monday through Friday

10am – 4pm, Saturday 10am – 2pm

On the Map 15



Other

Push Beyond Boundaries

Founded in 1871, San Francisco Art Institute is one of the nation's oldest and most prestigious schools of higher education in contemporary art.

We boast an illustrious list of faculty and alumni in all areas of focus. Most importantly, we have consistently held fast to a core philosophy of fostering creativity and critical thinking in an open, experimental, and interdisciplinary environment. At SFAI, we educate artists who will become the creative leaders of their generation.



Hours
By Appointment

On the Map 9

San Jose Museum of Art

📍 110 South Market St.
San Jose, CA 95113
☎ (408) 271-6840

✉ info@sjmusart.org
🌐 www.sanjosemuseumofart.org



7pm – 8pm

Thursday, October 6 | Opening Reception | Exhibition

11am – 5pm

Exhibition

Beauty – Cooper Hewitt Design Triennial

SJMA is the only West Coast venue for the latest global overview of design today, the Cooper Hewitt, Smithsonian Design Museum’s contemporary design triennial, traveling for the first time. Projects range from experimental prototypes and interactive games to fashion and architectural structures made feasible by material innovations. “Beauty” will feature 200+ works by 63 international designers, including Theseus Chan (Singapore), Maiko Takedo (Japan), Hans Tan (Singapore), Trace Architecture Office (China), Kyuya Shim (So. Korea), Sou Fujimoto Architects (Japan), Naomi Yasuda (Japan), Yeongkyu Yoo (So. Korea), & Jean Yu (So. Korea).

📅 October 7 – February 19 | Ongoing Event



Hours

Tuesday through Sunday 11am – 5pm,
11am – 8pm (or later) on the third Thursday of each month

On the Map 33



12am – 12am

Exhibition

📍 SFO, International Terminal (A2), San Francisco, CA 94110

From Print to Plate: Views of the East on Transferware

Blue-and-white transferware reached its peak in production and popularity in the first half of the 1800s. Designs on wares often featured distant lands such as India, the Middle East, and China. A number of superbly illustrated publications made around the first three decades of the 1800s helped fuel the British public's fascination with foreign locales. In an era before photography, over-sized tomes, such as *Oriental Scenery* (1795–1807), depicted the stunning landscapes and historic architecture of India. Such volumes featured outstanding examples of aquatints, produced using a printmaking technique that resembled ink or watercolor washes. As early as 1810, potters began using images from these scenic publications on ceramics.

This exhibition features blue-and-white wares made by Spode and a number of other British potters. Scenes featured on wares include famous architectural views of India, such as the Taj Mahal, drawn from *A Picturesque Tour along the Rivers Ganges and Jumna in India* (1824).

📅 July 30 – March 19 | Ongoing Event



Hours

Monday through Sunday
12am – 12am

On the Map 27



Society for Art & Cultural Heritage of India

📍 155 15th Avenue
San Francisco, CA 94118
☎ (650) 386-3491

✉ info@sachi.org
🌐 www.sachi.org



7pm – 9pm

Friday, October 7 | Artist Talk

📍 Palo Alto Art Center, 1313 Newell Road, Palo Alto, CA 94303

Subterranean Ghosts: India's Vanishing Stepwells

Stepwells are subterranean edifices unique to the subcontinent, first constructed around the 6th century CE and continuing for over a millennium. As marvels of architecture, engineering and art they are nearly unsurpassed, often enormous in scale and with extraordinary ornamentation, commissioned by both Hindus and Muslims alike. Unlike other historic monuments they performed several vital functions, the most important of which was to provide water year-round, even when it was ten stories deep. Long flights of stairs accessed the bottom most level in dry seasons, while during monsoons the often-ornate structures could fill to the top. Stepwells were also civic centers, spiritual destinations, cool retreats in brutal heat, and essential oases for remote caravans. Thousands once existed throughout the country, but most have disappeared – and continue to – from lack of use and interest. Preserving these unknown wonders requires an international effort.



Hours
Monday through Sunday
10am – 5pm

On the Map 19

Society for Asian Art



200 Larkin Street
San Francisco, CA 94102
(415) 581-3701

saa@societyforasianart.org
www.societyforasianart.org



Mid-Autumn Festival, 1969, by Liu Guosong (Chinese, b. 1932). Ink and colors on paper. Asian Art Museum, 2003.22. © Estate of Liu Guosong. Photograph © Asian Art Museum.

10:30am–12:30pm

Friday, September 30 | Lecture

Artisans to Artists: Colonial & Post-Independent Art Education in Vietnam & Cambodia

Dr. Nora Taylor, Professor at the School of the Art Institute of Chicago
Fall 2016 “Arts of Asia” Lecture Series, “From Monet to Ai Wei Wei: How We Got Here.”

1:30pm–3:30pm

Saturday, October 1 | Lecture

Material Culture in “The Dream of the Red Chamber”

Dr. Ellen Huang, Visiting Scholar at UC Berkeley, will give an illustrated talk on the various materials, such as furniture, costumes, ceramics which are described and appear as backdrops, in the famous Chinese novel “The Dream of the Red Chamber”

10:30am–12:30pm

Friday, October 7 | Lecture

Warhol & Mid-Century Modernisms: Art is Anything You Can Get Away With

Dr. Karin Oen, Asst. Curator of Contemporary Art at the Asian Art Museum
Fall 2016 “Arts of Asia” Lecture Series, “From Monet to Ai Wei Wei: How We Got Here.”



Hours
Monday through Friday
9am – 4pm

On the Map



The Mongolia Foundation

419 Stannage Avenue
Albany, CA 94706

info@mongoliafoundation.org
www.mongoliafoundation.org



3pm – 6pm

Tuesday, October 4 | Lecture

208 Library Ct (180 Doe Library), Berkeley, CA 94720

Mongolian Calligraphy and Scripts

This event introduces the history and art of Mongolian calligraphy. Mongolia scholar Brian Baumann, who teaches modern and Classical Mongolian language at UC Berkeley, will discuss and demonstrate the history and variety of scripts and writing systems in Mongolia. The Mongolian artist T. Jamyansuren will demonstrate the art of calligraphy and its specific features. An accompanying exhibit will show his research on a variety of scripts throughout 13th c.-20th c. and richness of calligraphic tradition in Mongolia. The event will also present a poetry citation by a Mongolian poetess B. Enkhjargal from Bay Area. Co-sponsored and co-organized by the Mongolia Foundation.



Hours
By Appointment
10am – 5pm

On the Map 3

Participants & Partners on the Map

| | | |
|----|--|---------|
| 1 | Gallery Route One | Page 35 |
| 2 | Afsaneh Art & Culture Society - Ballet Afsane | Page 20 |
| 3 | The Mongolia Foundation | Page 55 |
| 4 | Institute of East Asian Studies, UC Berkeley | Page 37 |
| 5 | Berkeley Art Museum & Pacific Film Archive | Page 25 |
| 6 | Clars Auction Gallery | Page 32 |
| 7 | Oakland Asian Cultural Center | Page 47 |
| 8 | Michaan's Auctions | Page 44 |
| 9 | San Francisco Art Institute | Page 50 |
| 10 | Society for Asian Art | Page 54 |
| 11 | Christie's | Page 31 |
| 12 | Asia Society Northern California | Page 23 |
| 13 | Chinese Culture Center | Page 29 |
| 14 | Chinese Historical Society of America Museum | Page 30 |
| 15 | S. Bernstein & Co., Jade & Oriental Art | Page 49 |
| 16 | Asian Art Museum | Page 24 |
| 17 | Contemporati Studios | Page 33 |
| 18 | Korean Center | Page 43 |
| 19 | Society for Art & Cultural Heritage of India | Page 53 |
| 20 | International Art Gallery | Page 39 |
| 21 | Center for Asian American Media | Page 27 |
| 22 | ArtSpan | Page 21 |
| 23 | Bonhams | Page 26 |
| 24 | Kearny Street Workshop | Page 42 |
| 25 | Fine Arts Gallery at SF State | Page 34 |
| 26 | Inner Eye Arts | Page 36 |
| 27 | SFO Museum | Page 52 |
| 28 | NanHai Art | Page 45 |
| 29 | Peninsula Museum of Art | Page 48 |
| 30 | Islamic Art Exhibit | Page 40 |
| 31 | Center for East Asian Studies, Stanford University | Page 28 |
| 32 | Japanese American Museum of San Jose | Page 41 |
| 33 | San Jose Museum of Art | Page 51 |



NORTH BAY

EAST BAY

SAN FRANCISCO

PENINSULA

SOUTH BAY

Home to 7.15 million people, San Francisco Bay Area is one of the most diverse and dynamic regions in the world.

Asia Week San Francisco Bay Area

📍 510 Broadway, Suite 301, Millbrae, CA 94030

☎ (650) 259-2100

✉ info@asiaweeksf.com

🌐 www.asiaweeksf.com